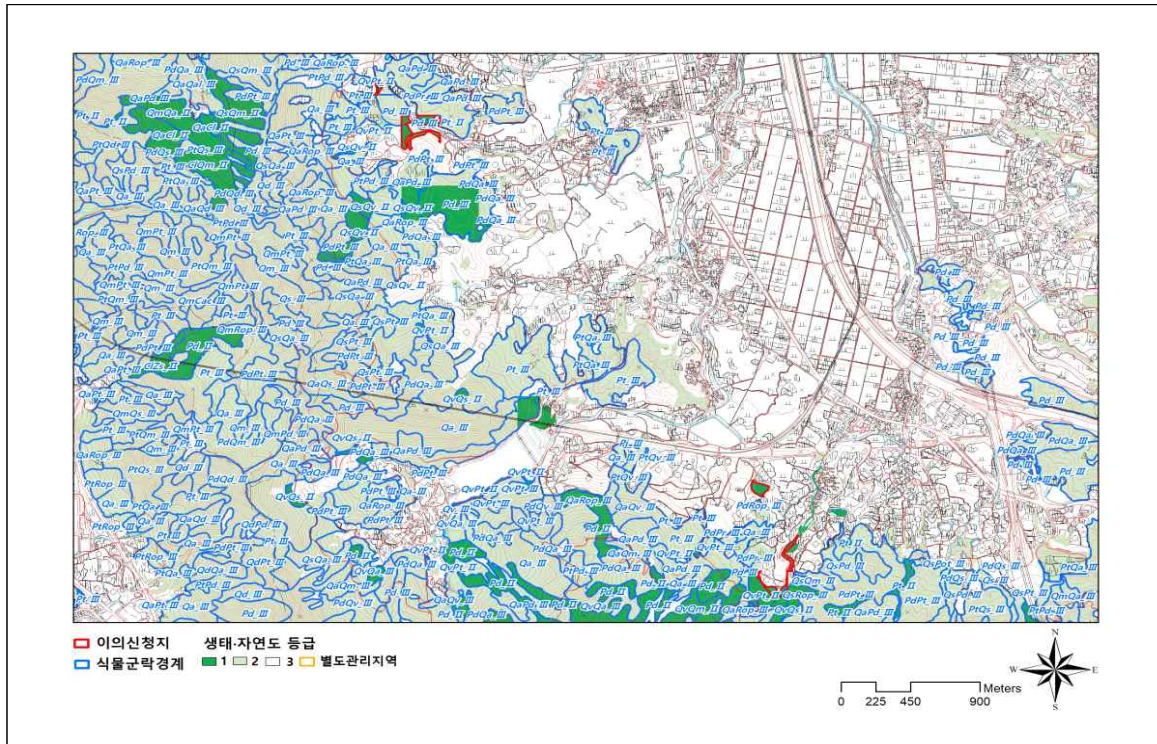


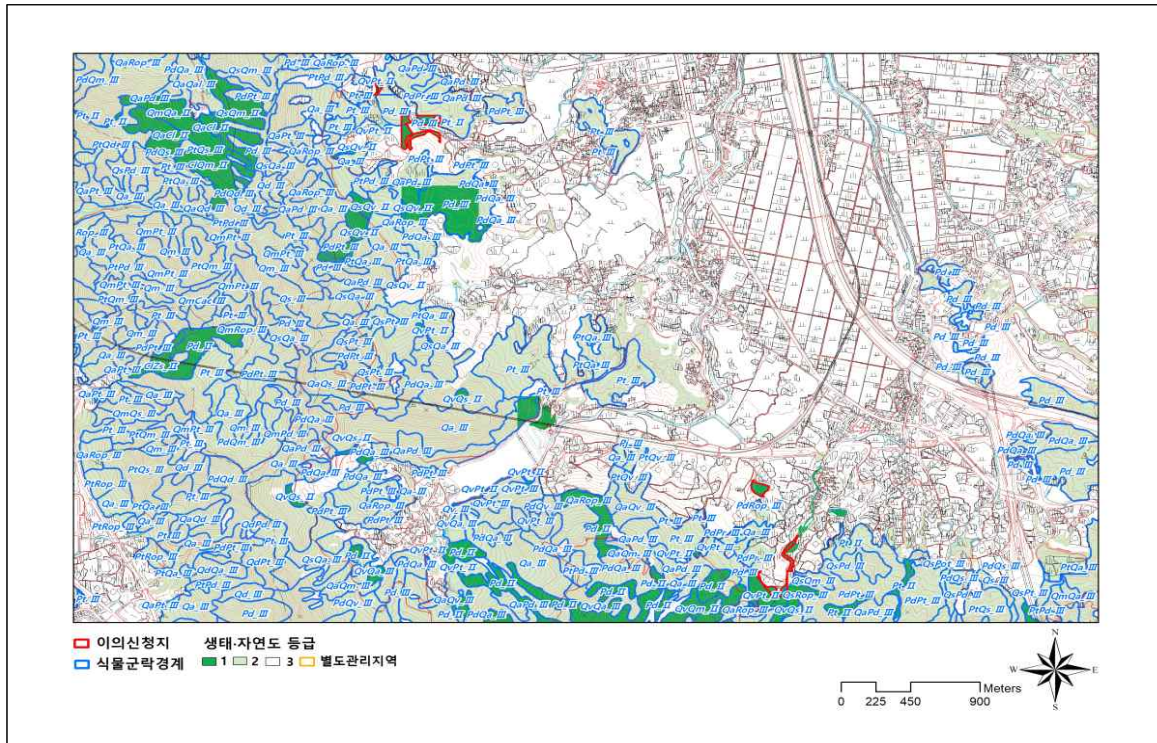
생태·자연도 수정·보완(안) 공고 도면

○ 경상남도 김해시 진례면 송정리 산38-9 일대(진해:358152, 무계:358161, 진영:358114)

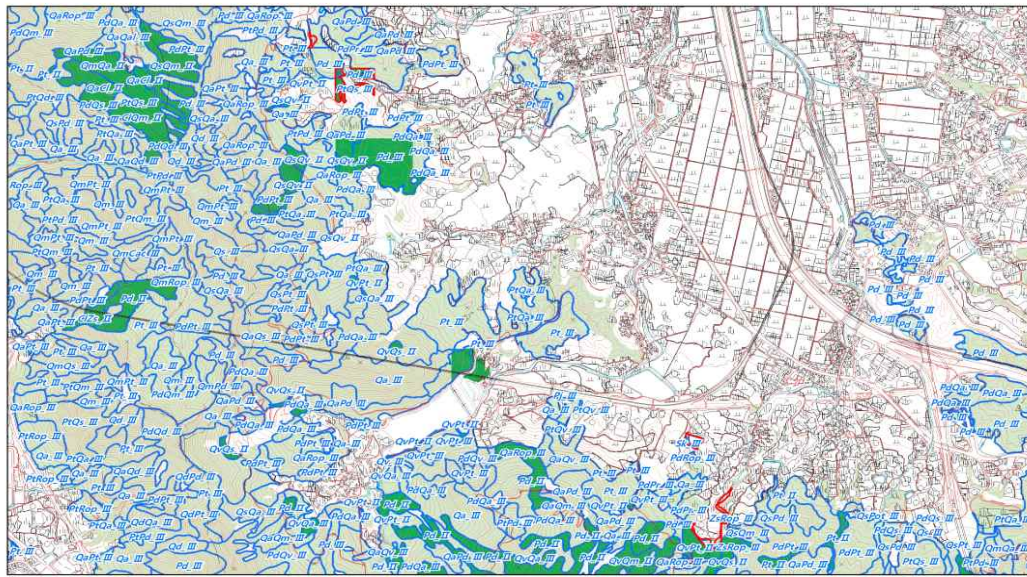
1. 당초고시(2021.11)



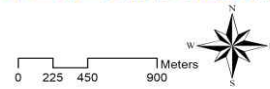
2. 정기고시(안) 당초고시(2022.2)



3. 수정·보완(안) 도면

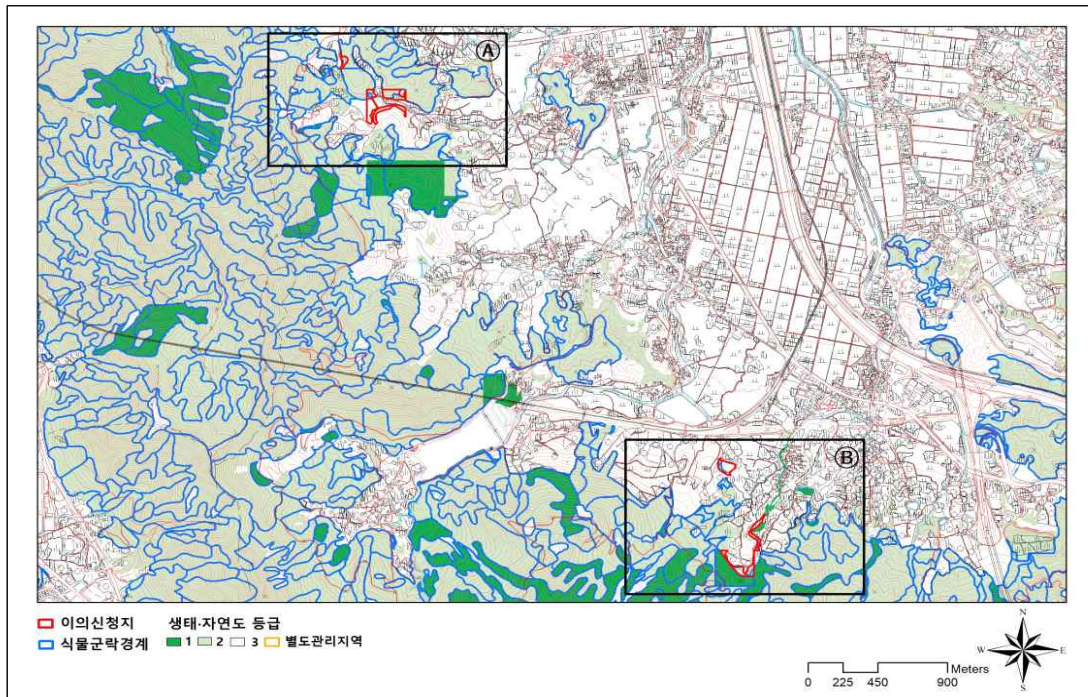


■ 이의신청지 생태·자연도 등급
■ 식물군락경계 ■ 1 ■ 2 ■ 3 ■ 별도관리지역

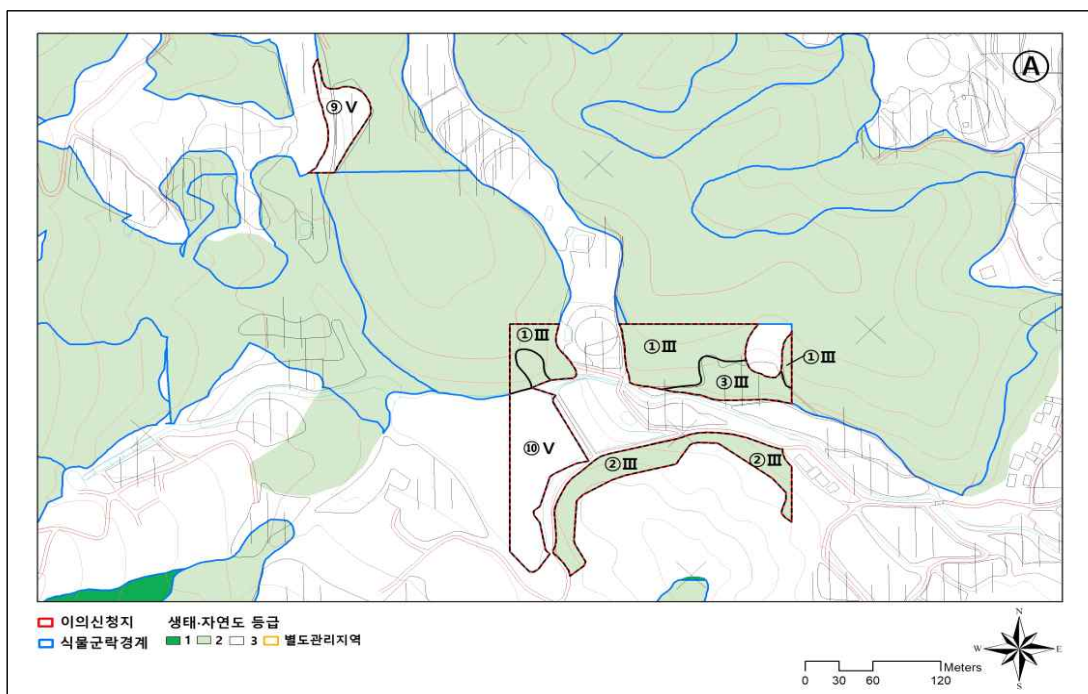


가. 식생정밀조사결과

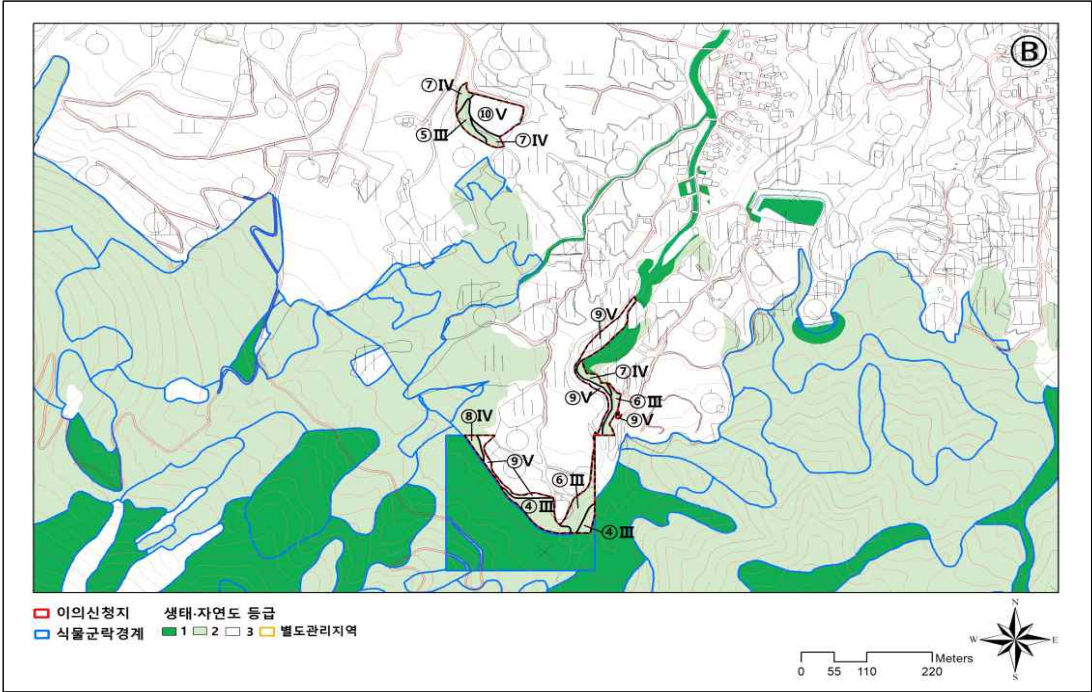
순번	식물군락 유형	식생보전등급	생태자연도
①	Pd(소나무군락)	Ⅲ	2
②	PtQs(곰솔-줄참나무군락)	Ⅲ	2
③	Qs(줄참나무군락)	Ⅲ	2
④	QsRop(줄참나무-아까시나무군락)	Ⅲ	2
⑤	Sk(버드나무군락)	Ⅲ	2
⑥	ZsRop(느티나무-아까시나무군락)	Ⅲ	2
⑦	Rop(아까시나무식재림)	Ⅳ	2
⑧	Pb(왕대식재림)	Ⅳ	2
⑨	Seg(2차초지)	Ⅴ	3
⑩	Wa(수역)	Ⅴ	3



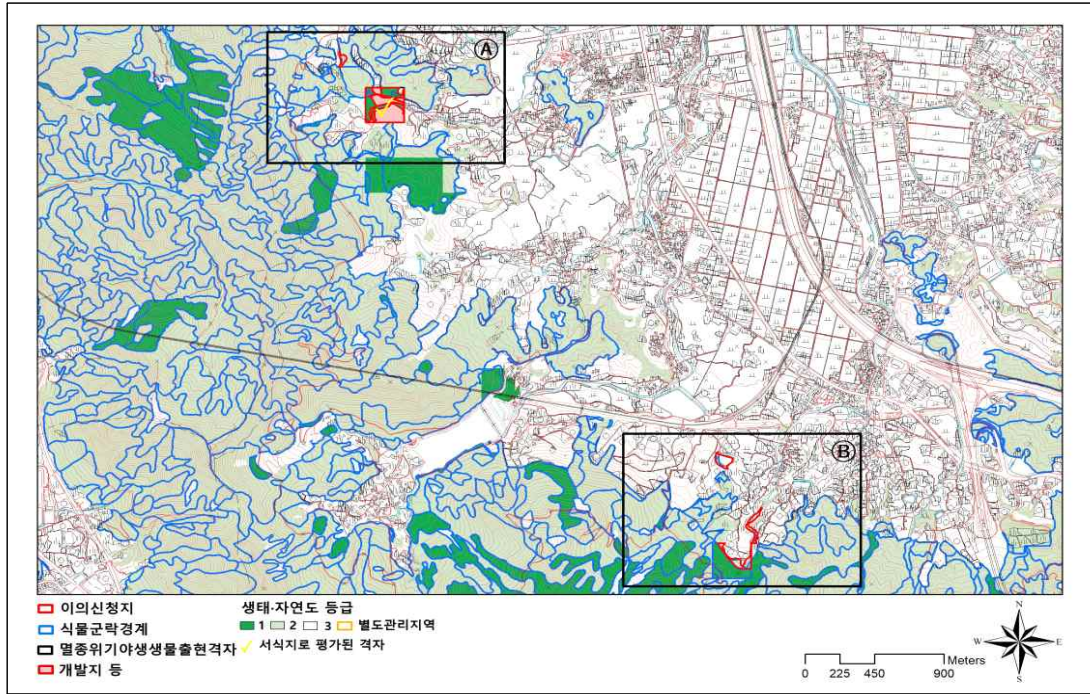
가-A. 식생정밀조사결과



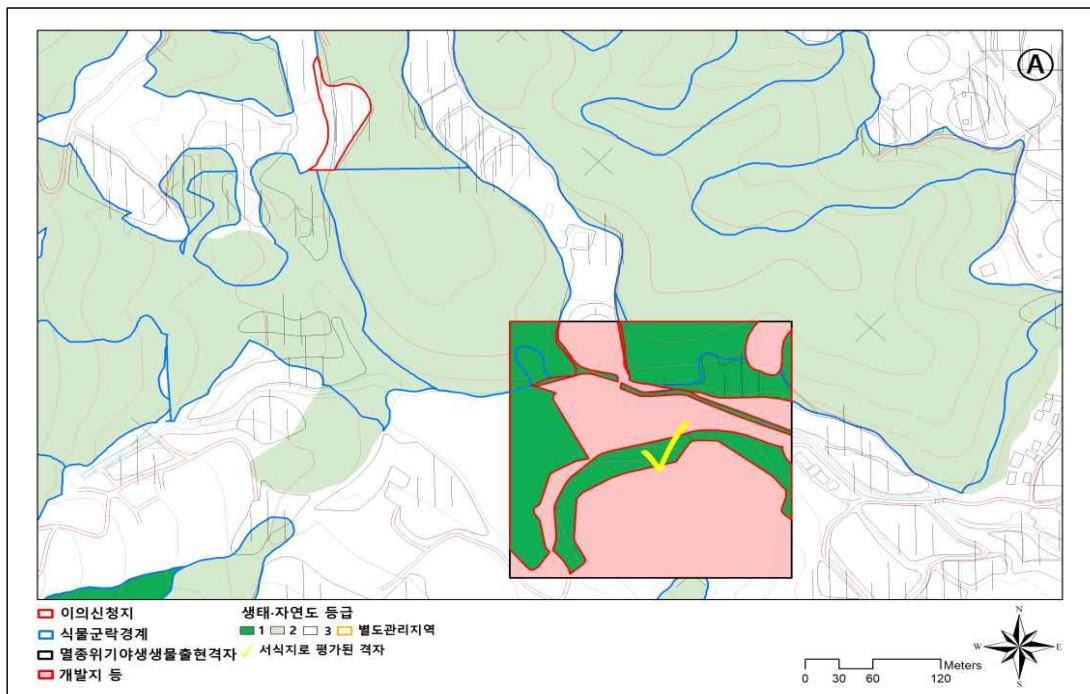
가-B. 식생정밀조사결과



나. 동물정밀조사결과



나-A. 동물정밀조사결과



나-B. 동물정밀조사결과

