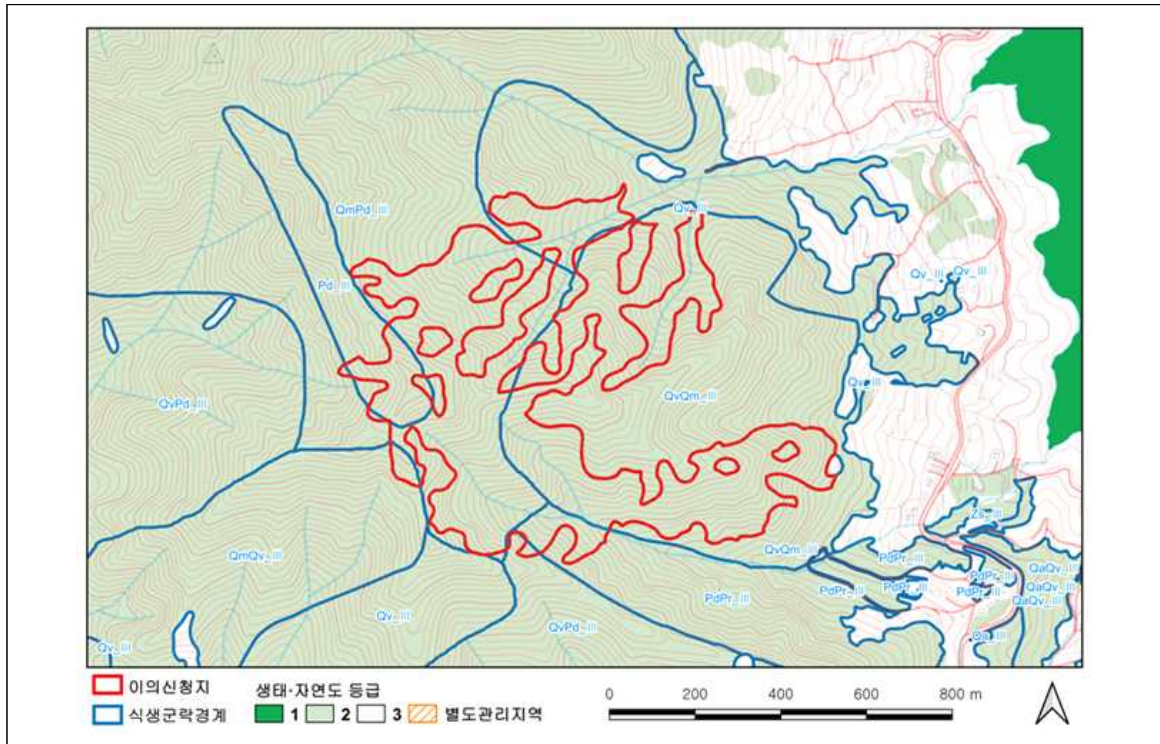


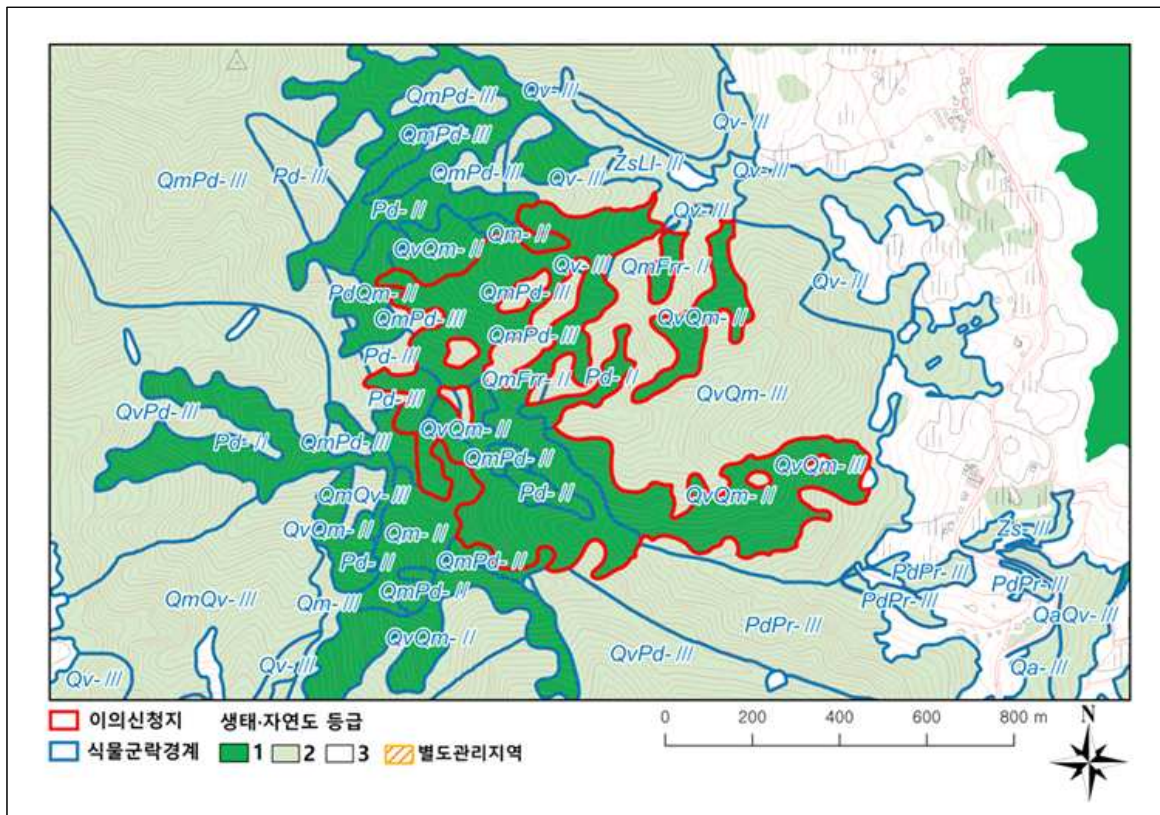
# 생태·자연도 수정·보완(안) 공고 도면

○ 충청북도 충주시 종민동 산6-1 일원(충주: 367042)

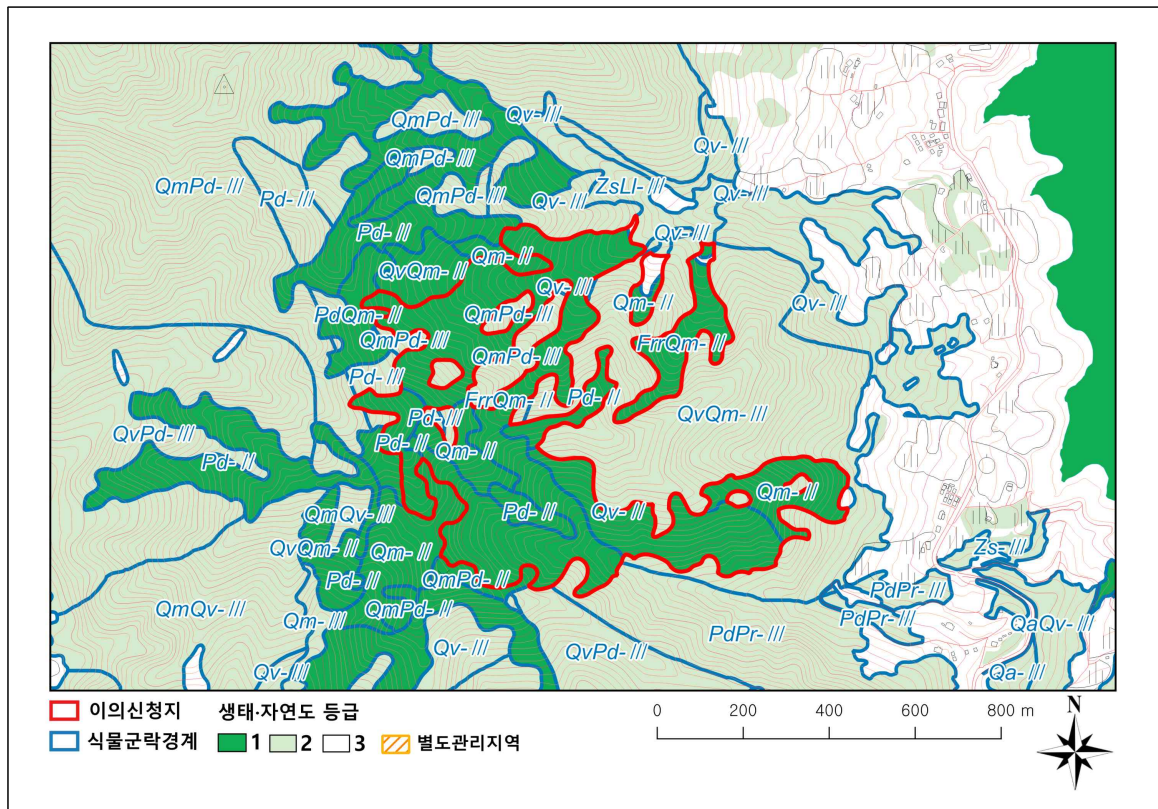
1. 당초고시(2022.4)



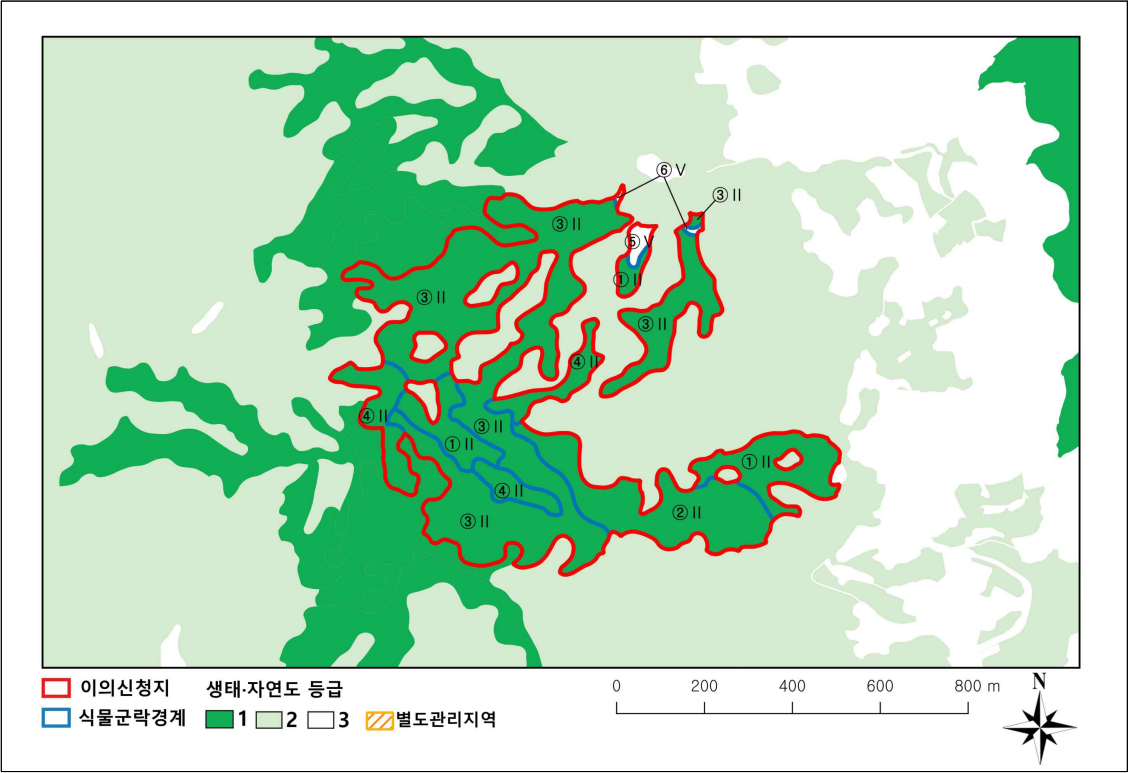
2. 2023년 정기고시(안)



### 3. 수정·보완(안) 도면



가. 식생정밀조사결과



순번	식물군락 유형	식생보전등급	생태자연도
①	Qm(신갈나무군락)	Ⅱ	1
②	Qv(굴참나무군락)	Ⅱ	1
③	FrrQm(물푸레나무-신갈나무군락)	Ⅱ	1
④	Pd(소나무군락)	Ⅱ	1
⑤	Aca(다래군락)	V	3
⑥	Da(개밭지)	V	3