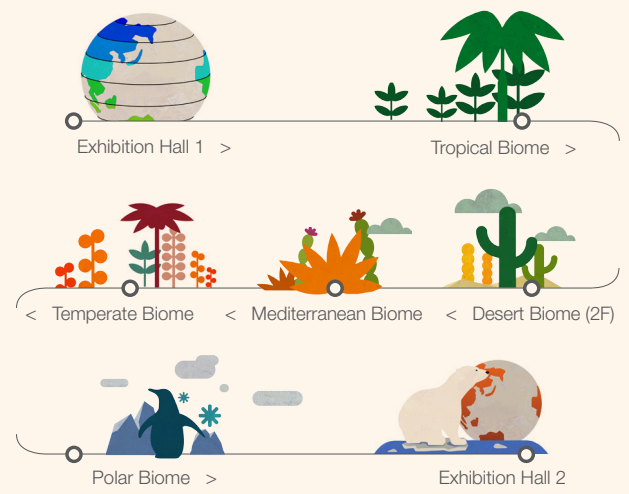


Ecorium

The Ecorium, an indoor exhibition facility, houses and displays a wide variety of 2,400 species of animals and plants representing tropical, desert, Mediterranean, temperate and the polar climate regions. It also contains the Exhibition Hall 1 & 2, a 4D theater, an Eco-Lab, a restaurant and more.



Ecorium Tour Order



Exhibition Hall 1 > Tropical Biome > Desert Biome (2F) > Mediterranean Biome > Temperate Biome > Polar Biome > Exhibition Hall 2

Exhibition Hall 1, 2

- 1st Hall: Basic concepts of ecology, definition of biome (communities of plants and animals), etc.
- 2nd Hall: Ecosystem services, ecological resources preservation, destruction and protection of ecosystems, etc.



Exhibition Hall 1      Exhibition Hall 2

Tropical Biome

Hot and humid tropical rainforests. Diverse plant varieties of about 450 types are on display, alongside nearly 150 species of fish, amphibians and reptiles that inhabit tropical rivers and seas.



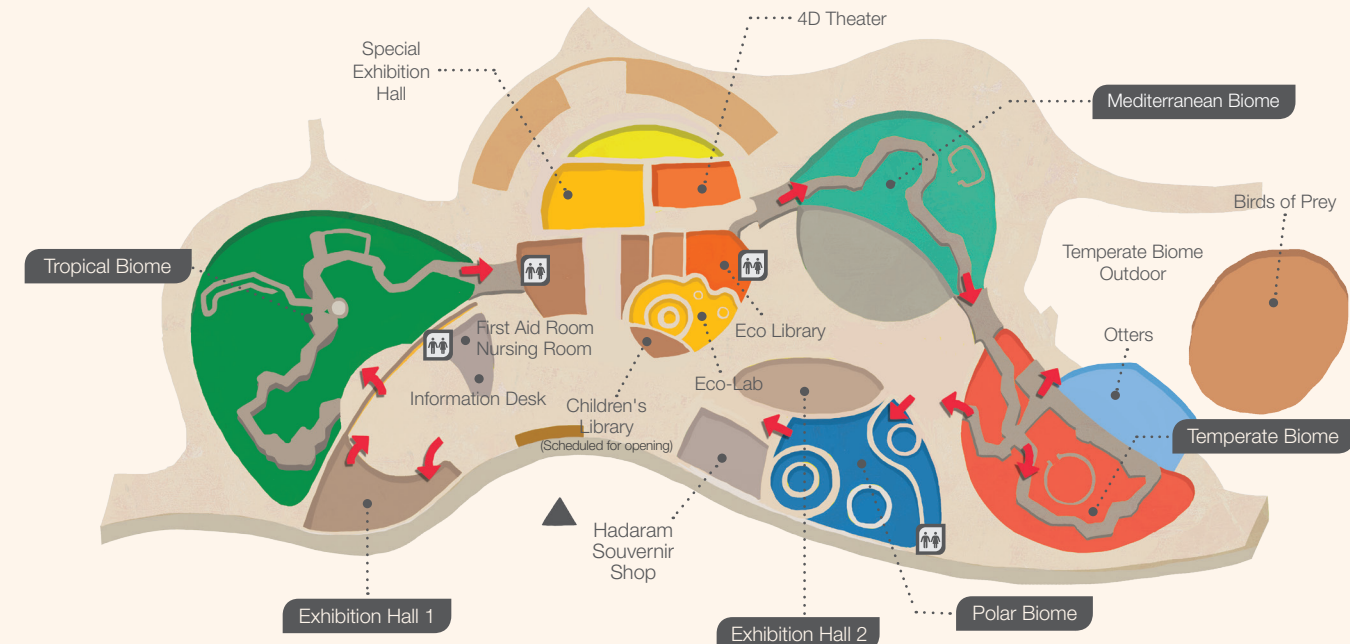
Desert Biome

A hot and dry desert region is recreated here, of which the annual average precipitation is only 250 mm, and the wintertime temperature is maintained at over 10℃.

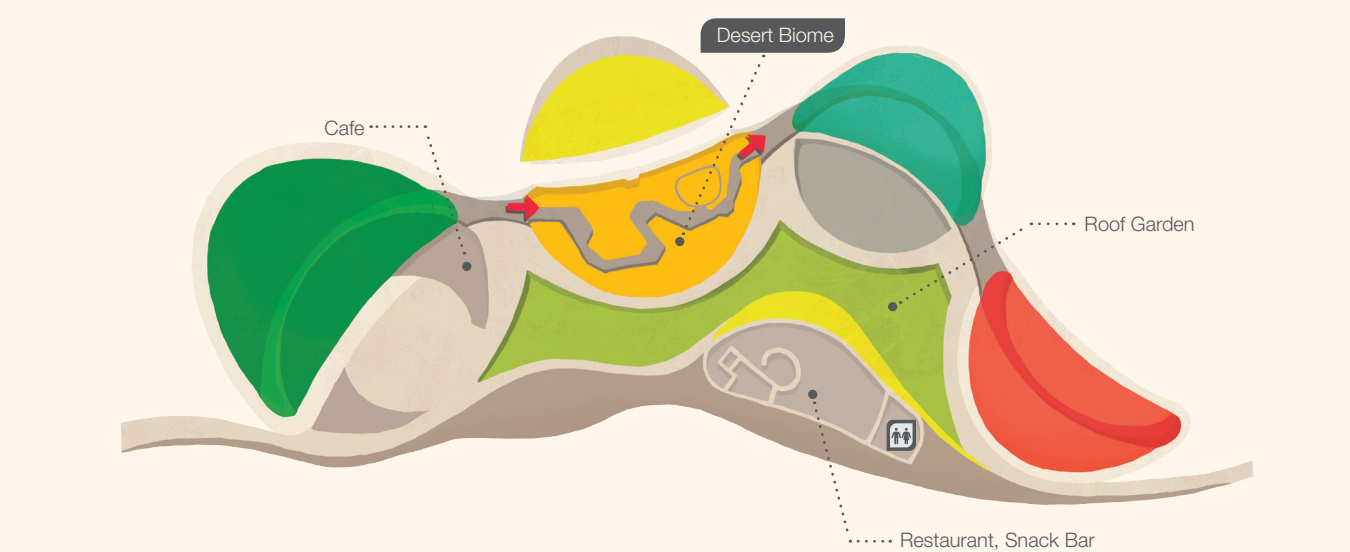


Infomation

1F



2F



Mediterranean Biome

A mediterranean climate, which is extremely dry in the summer but mild and humid in the winter.



Temperate Biome

The warm temperate forests of Jeju Island and mountainous areas in Korea are recreated here. Plants from Gotjawal in Jeju, otters, and birds of prey can be found outside.



Polar Biome

The polar ecosystem has been recreated here, including 15 plants, 2 penguins, and various stuffed specimens from the South Pole and the North Pole.



Special Exhibition Hall

Special exhibitions that are held under a wide range of themes, according to the mission and vision of the National Institute of Ecology, provide interesting sights to enjoy and useful information to learn. (Ant Exhibition planned for Dec 2014)



4D Theater

4D theater with a 3D movie supported by vibrations, winds and other special effects.



Inside 4D Theater      4D Animation Film

Eco-Lab

Consists of lecture halls for ecological education, group orientations, and lectures.



Eco-Lab      Eco-edutainment Hall

Children's Library

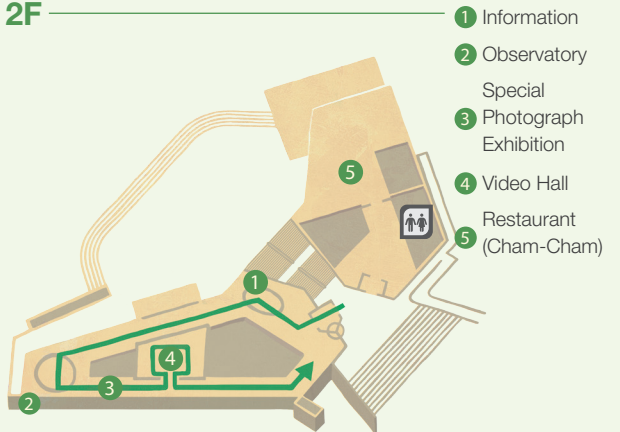
A place for children to access reference books and publications on ecology. (Scheduled for opening)

Visitor's Center

This is where the multiple facilities in the NIE, and what the institute does, are introduced through experiential exhibits.

- **Video Hall:** Introduction to the establishment of the NIE narrated in documentary form and depicted through animation
- **Observatory:** A digital observatory where visitors can look around the NIE with information on the various facilities
- **Special Photograph Exhibition:** Establishment process of the NIE, and wild flower photographs
- **PR Pavilion:** Overview of the outdoor spaces in the NIE, its facilities including the Ecorium, and the research and education activities performed by the NIE
- **Specialty Exhibition Shop:** Local products and tourist information

2F



1F



Admission Information

Hours of Operation

Spring/Fall (Mar-Jun, Sept-Oct)	Summer (Jul-Aug)	Winter (Dec-Feb)
10:00~18:00	10:00~19:00	10:00~17:00

- Last admission is one hour before closing time.
- Closed: Every Monday (If Monday happens to fall on a holiday, the first weekday that comes immediately after the holiday is closed) and 1 day before and the days of the Lunar New Year and Chuseok holidays.

Notice to visitors

- The following items are prohibited:**
- Alcohol, gas burners/BBQ equipment, mats, tents, awnings, balls, and sporting equipment including bicycles, skates etc.
  - Pets (other than assistant dogs)
  - Please refrain from the following:
    - Intrusive behavior such as excessive noise
    - Feeding the animals
    - Flash photography
    - Entry inside the boundary lines
    - Entering gardens or restricted areas, or picking plants
    - Children six and under are not permitted without a parent or caregiver.
    - Animals may be moved and/or unavailable for viewing without prior notice.
    - Found items will be treated pursuant to the Enforcement Decree of Lost Property Act.
    - Please use caution and refrain from any behavior that might cause inconvenience or harm to others.
    - We will not be held responsible or liable for any accidents caused by a visitor's inappropriate behavior.
- \* **Emergency contact: 041-950-5911 (Contact for emergencies)**

Convenience Facilities

- **Electric cars:** These cars are provided for children 4 years or younger, senior citizens 65 years or older, and people with disabilities, and 1 caregiver. Main Gate-Visitor's Center-Hadaram Plaza-Second Gate.
- **Wheelchair rental:** Available at the ticket booth and Ecorium Info-Desk (requires a refundable deposit of 10,000 won).
- **Stroller Rental:** Available at the ticket booth and Ecorium Info-Desk (requires a refundable deposit of 10,000 won).
- **Ecorium Voice Guide Device Rental:** Available at the Ecorium Info-Desk (available in Korean, English, Japanese and Chinese. Requires a refundable deposit of 10,000 won).

NATIONAL INSTITUTE OF ECOLOGY GUIDE MAP



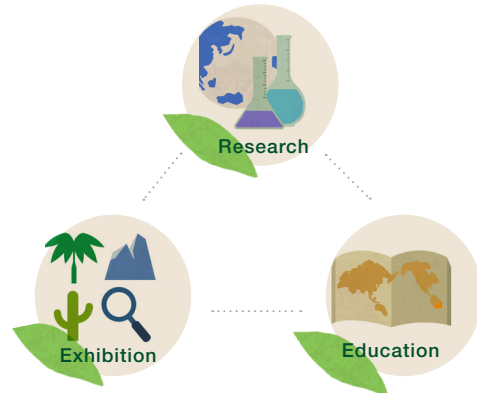
National Institute of Ecology

Meet another small earth  
National Institute of Ecology

The National Institute of Ecology (NIE) is an ecological research, exhibition, and education complex where you can study and experience live animals and plants in 5 biomes, such as tropical, desert, mediterranean, temperate, and polar, including the Korean ecosystem.



What does the National Institute of Ecology do?



01. Research

Establish the fundamentals of basic ecology, strengthen international ties and joint research activities to keep up with climate change and respond to it, and create ecological research activities that are vibrant for biodiversity.

02. Exhibition

Provide exhibitions so that visitors can enjoy themselves and gain firsthand experiences of different ecosystems, ranging from tropical regions to deserts, polar regions and the representative forests and wetlands of Korea.

03. Education

Provide customized ecological and experience based education programs with various courses and themes, for ages ranging from toddlers through to adults.



Wide Area Map

Geumguri Zone

**Yonghwasil Pond**  
Yonghwasil Pond, the biggest pond in the NIE, is a water source for the entire institute and a habitat for various types of birds and plants.

**Wetlands in Korea**  
The wetland ecosystems of Korea are on full display. This zone is composed of the 'Wetlands in Korea' and the 'Aquatic Botanical Garden' displays.



Yonghwasil Pond-Mandarin ducks      Wetland ecosystem of Korea

**Wetland Experience Site**  
This site supports various types of live animals and plants that inhabit the wetlands of Korea.

**Seocheon Agriculture Ecology Center**  
Edible, medicinal herbs and fruit trees, which are familiar to most of us, are planted here.

**Visitor's Center**  
This is a promotional pavilion for the facilities, functions and eco-friendly systems operated by the NIE.

**Geumguri Pond**  
A common ecosystem similar to any other pond in Korea, along with its animals and plants.



Wetland Experience Site      Visitor's Center

Najeoeh Zone

**Najeoeh Pond**  
The first pond to welcome visitors to the National Institute of Ecology and a rest spot for aquatic life.



Stork      Spoonbill

Hadaram Zone

**High Mountain Ecology Center**  
Rare, native plants from high mountainous areas such as Baekdu Mountain, Seorak Mountain, Jiri Mountain, Halla Mountain, etc.

**Korean Forest**  
Forest vegetation according to different climates in Korea.



Alpine Ecosystem Learning Area      Korean Peninsula Forest Learning Area

**Hadaram Plaza**  
A space for family and children. There is a playground, rest area, convenience store, shelter for sick animal friends, and many other facilities, for your convenience.

**Hadaram Playground**  
A children's playing space comprised of the Forest Playground, Little Kids Playground, and Water Playground.

**Please observe the following warnings**  
1. Playground equipment is designed for children aged between 6-12.  
2. Parental supervision is required at all times.  
3. Always be alert to any potential accidents.  
4. Management assumes no liability for injuries or accidents that may occur, and each user is responsible for their own safety.

**Hadaram Rest Area**  
An indoor space for snacks. Tables, chairs, and drinking fountains are provided.

**Hadaram Shelter for Sick Animal Friends**  
A shelter where rescued animals live. Children will learn about the preciousness of life.

**Convenience store (Best Joy), Toilet**



Hadaram Playground      Hadaram Rest Area

Godaeryuk Zone

**Deer Ecology Center**  
Roe and Water deer living in reproduced habitat.



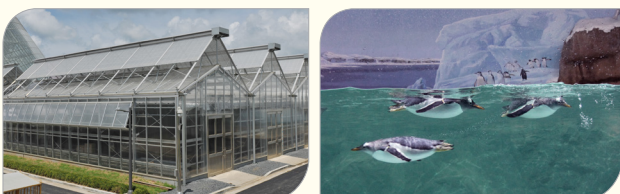
Roe deer      Forest area

Ecorium Zone

**Ecorium**  
The landmark building of the NIE with the world's 5 major climate zones (Tropical, Desert, Mediterranean, Temperate, Polar), a 4D Theater, a restaurant and cafe.

**Greenhouse (Restricted Area)**

A greenhouse where nearly 3,600 species of plants are cultivated from around the globe, according to climates and categories, in 29 different sections.



Greenhouse      Ecorium Polar Biome

Research & Education Zone Restricted Area

**Main Building:** NIE Administration and research about ecological change caused by climate change.

**Restoration Ecology Center:** Research on habitat restoration.

**Ecology Education Center:** Specialized experience based ecological education.



Ecoplex Main Building      Restoration Ecology Building

Recommended Tour Course

**From Front gate**  
Deer Ecology Center > Visitor's Center > Hadaram Palza > Ecorium > Wetlands in Korea > Yonghwasil Pond > High Mountain Ecology Center > Village Forest- Seocheon Agriculture Ecology Center > Korean Forest

**From Back gate**  
High Mountain Ecology Center > Yonghwasil Pond > Wetlands in Korea > Ecorium > Hadaram plaza > Visitor's Center > Korean Forest > Seocheon Agriculture Ecology Center > Village Forest



Information

**Eco-interpretation Program**  
Book this program to fully appreciate the features of the National Institute of Ecology through the lively commentary of the eco-interpretor.

- Program: Ecorium (inside the Ecorium), outdoor area (Ecorium front gate – Geumguri Pond).
- To apply: Make a reservation on the day at the Ecorium Information Desk.
- Capacity: 20 persons at a time (The numbers may be flexible in case of groups.)

Education Dormitory		
Type	A	B
Fee	60,000 won	100,000 won

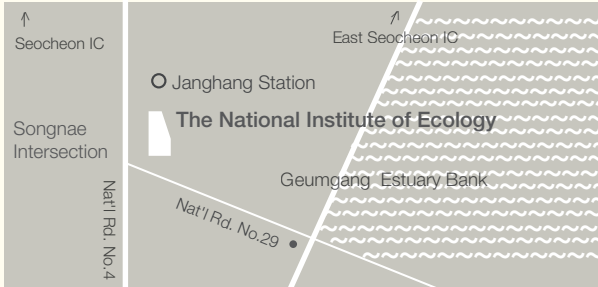
- A: 1 Room & Living Room / up to 4 people
- B: 2 Rooms & Living Room / up to 6 people
- TV, refrigerator, Korean style sleeping pad (no cooking equipment)
- For reservations, contact: Education Dormitory Administration Office (82) (41) 950-5960-1

Service Facility

	Restaurant	Visitor's Center, Ecorium 2F
	Cafe	Ecorium, Visitor's Center
	Convenience Store	Hadaram Rest Area, Ecorium
	Souvenir Shop	Ecorium

Location

**National Institute of Ecology**  
National Institute of Ecology, 1210, Geumgang-no, Maseo-myeon, Seocheon-gu, Chungcheongnam-do / (82) (41) 950-5300  
Homepage URL: [www.nie.re.kr](http://www.nie.re.kr)  
Facebook: [www.facebook.com/Ecoplex Korea](https://www.facebook.com/EcoplexKorea)



**By train**  
· Take the Janghang Line and get off at Janghang Station. Come to the back gate of the National Institute of Ecology.

**By car**  
· Seocheon Expressway direction  
Seocheon IC – Nat'l Rd. No. 4 (Gunsan direction) – Songnae Intersection, Nat'l Rd. No. 21 (Gunsan direction) – Entrance to the National Institute of Ecology.

· Seocheon Gongju Expressway direction  
Dongseocheon IC – Nat'l Rd. No. 29 (Seocheon direction) – Turn right at Geumgang Estuary Bank, Nat'l Rd. No. 21 (Seocheon direction) – Entrance to the National Institute of Ecology.

