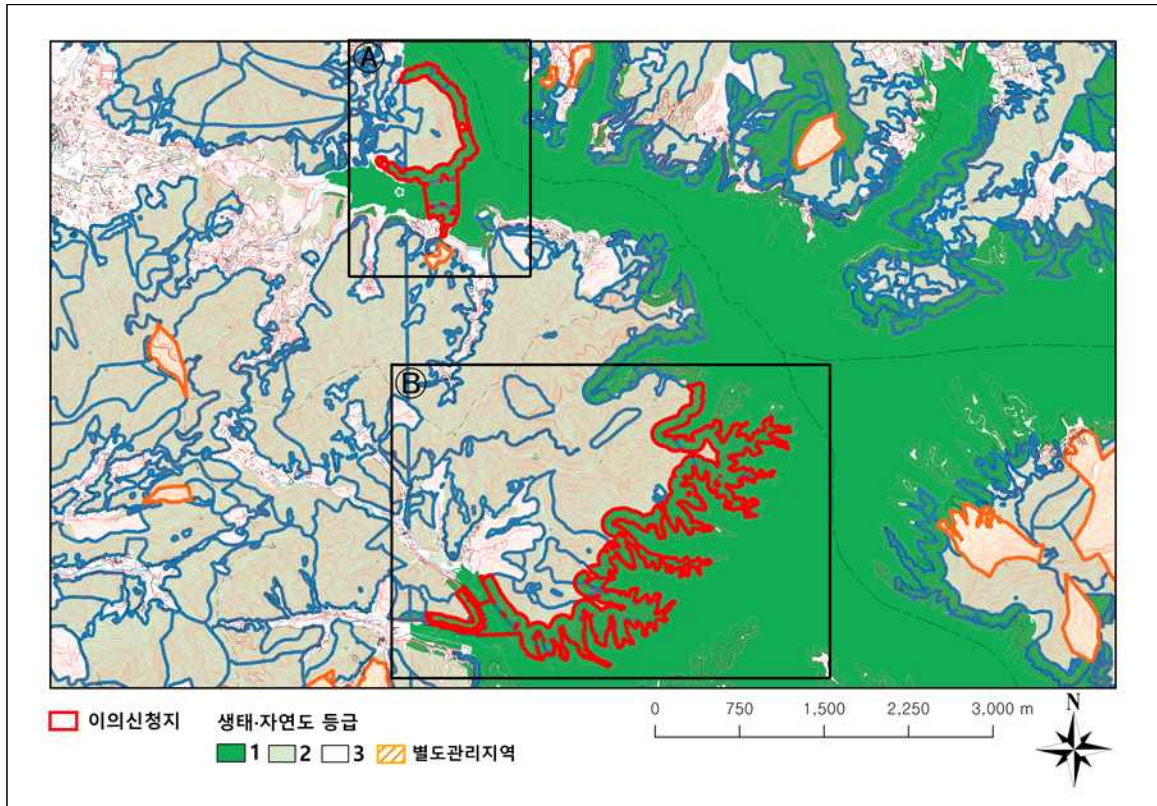


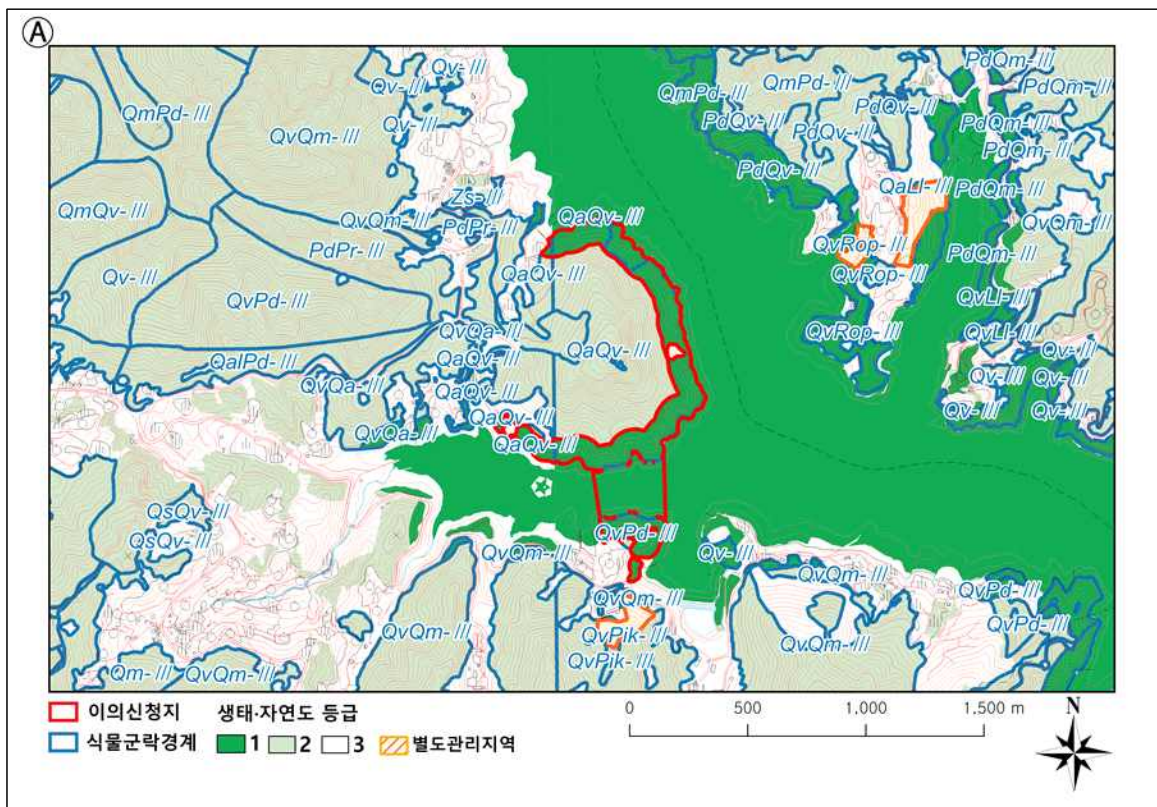
# 생태·자연도 수정·보완(안) 공고 도면

○ 충북 충주시 종민동 및 문화리 일대(충주:367042, 황강:368011)

1. 당초고시(2022.4)

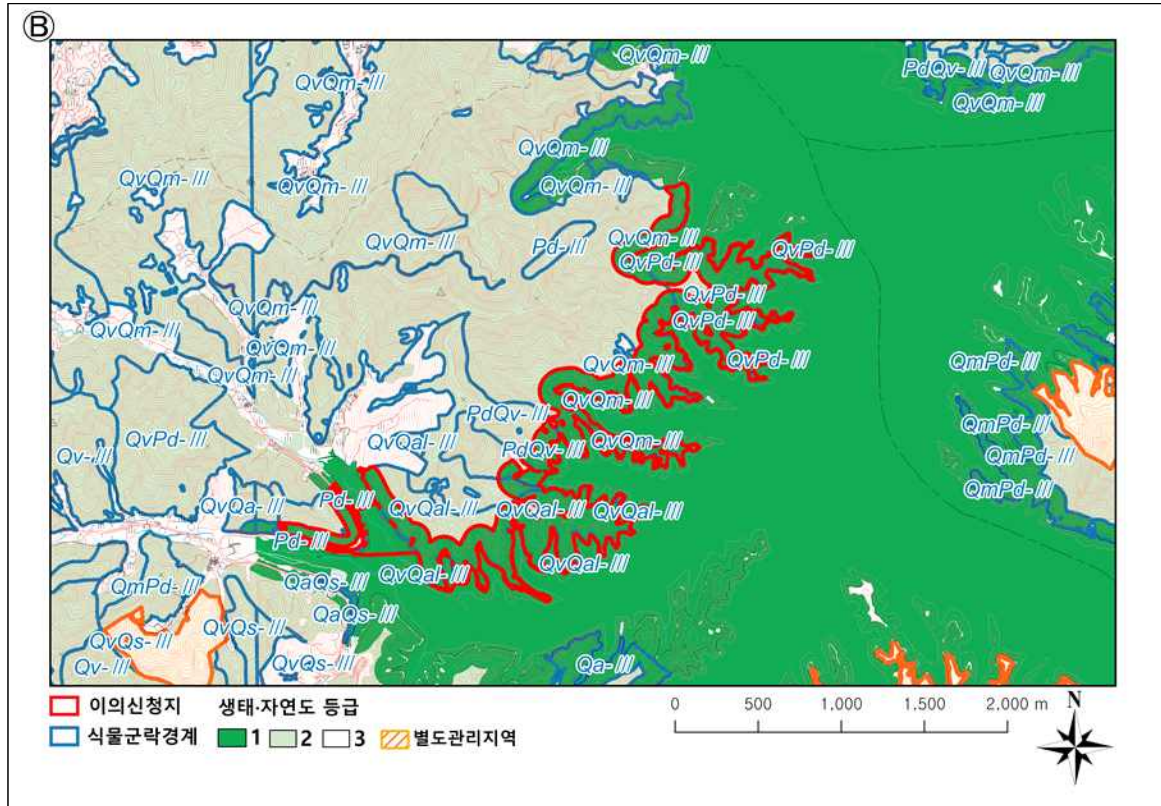


Ⓐ

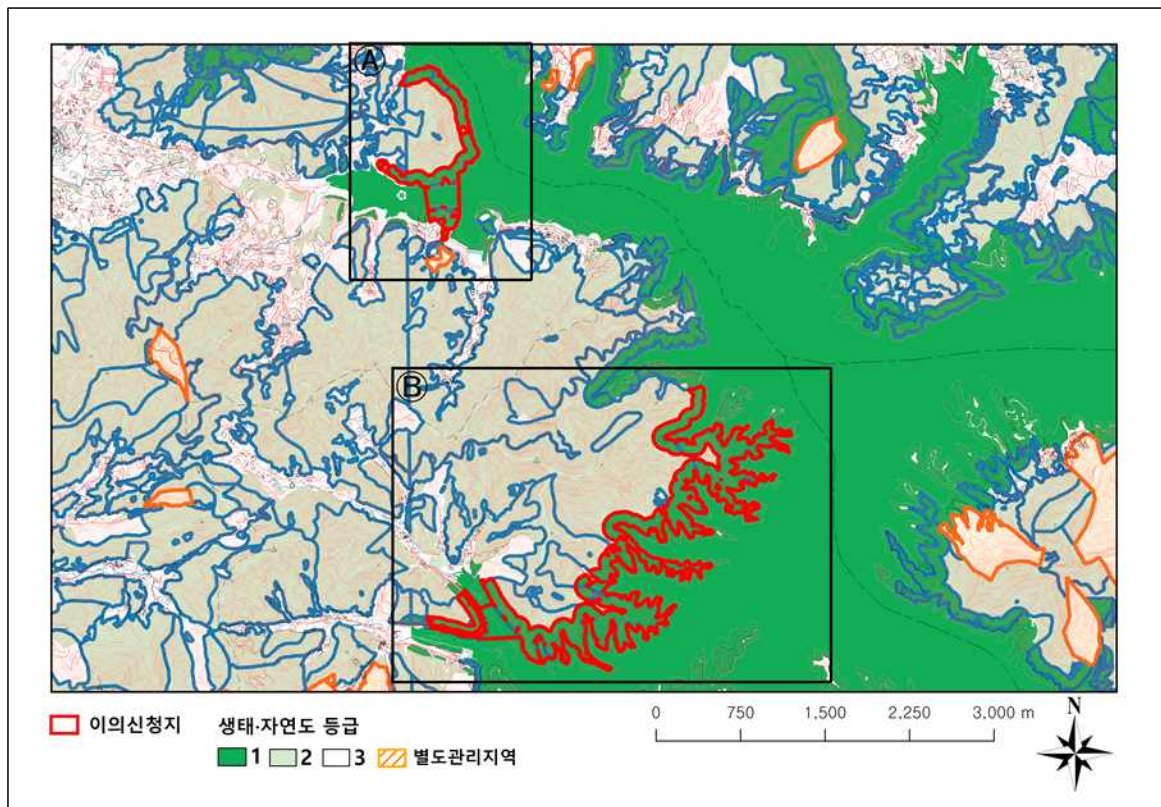




㉞

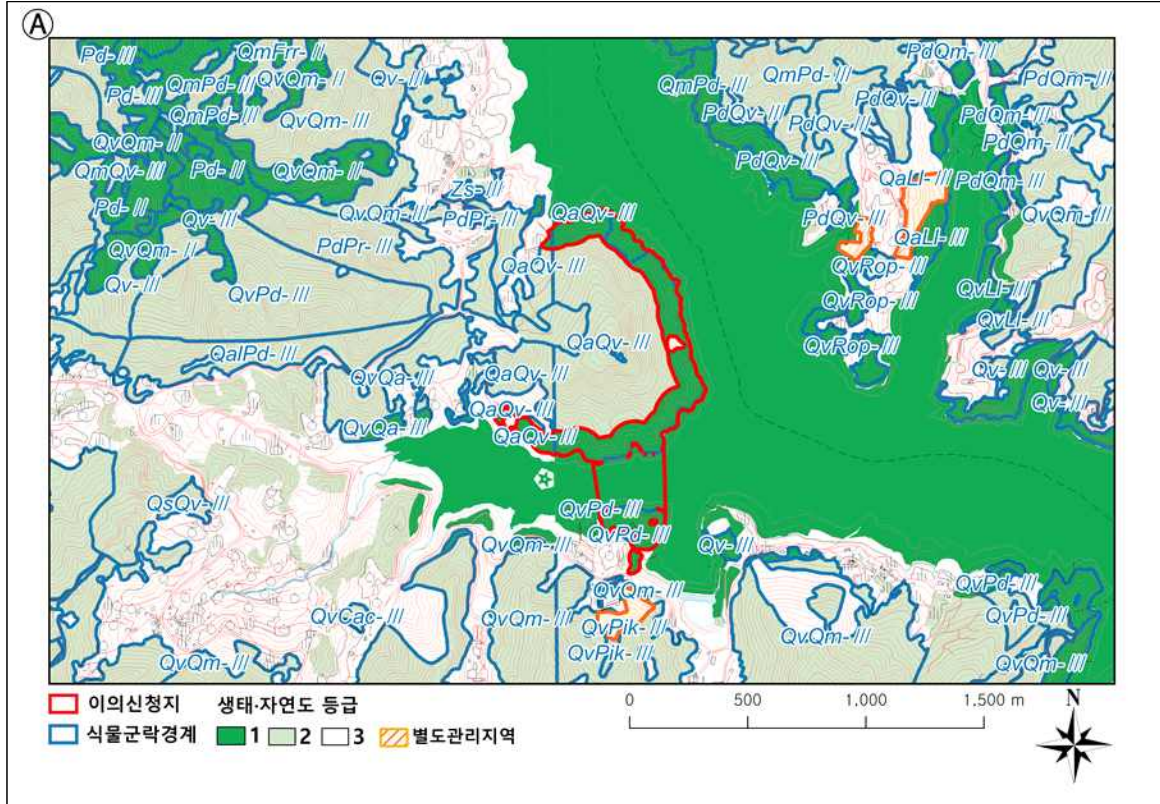


## 2. 2023 정기고시 도면

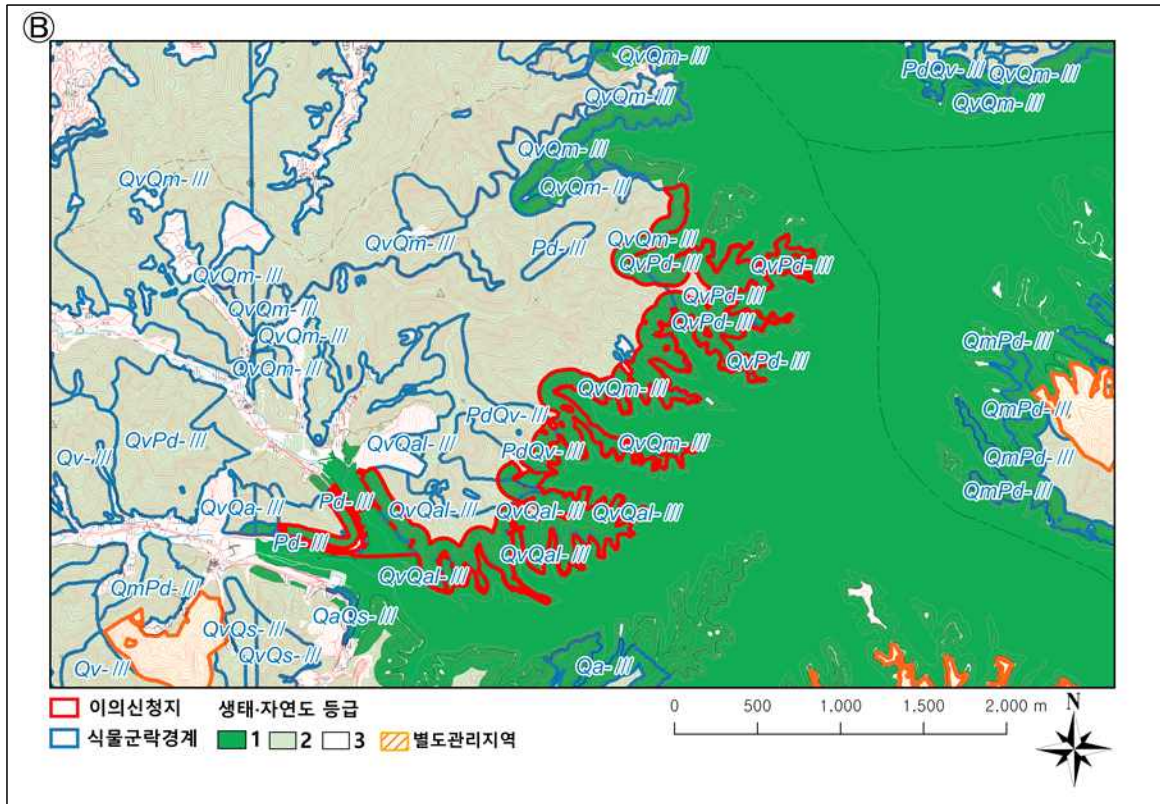




㉠

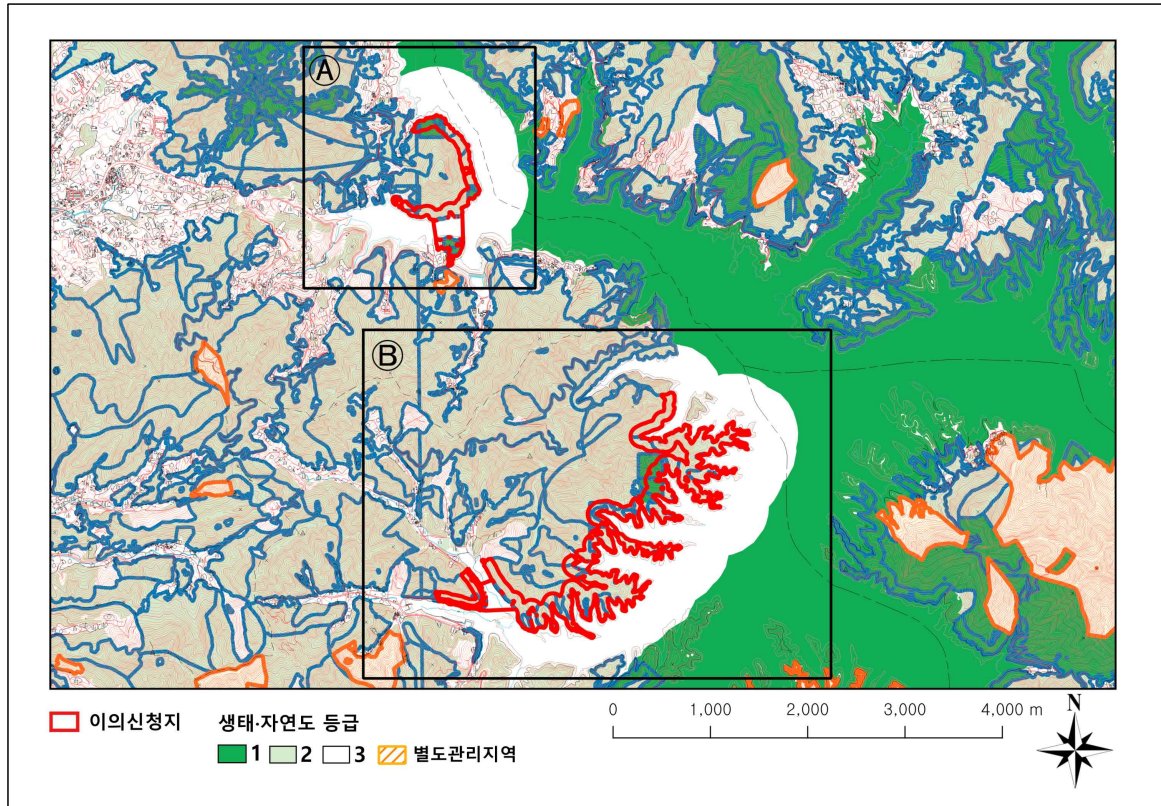


㉡

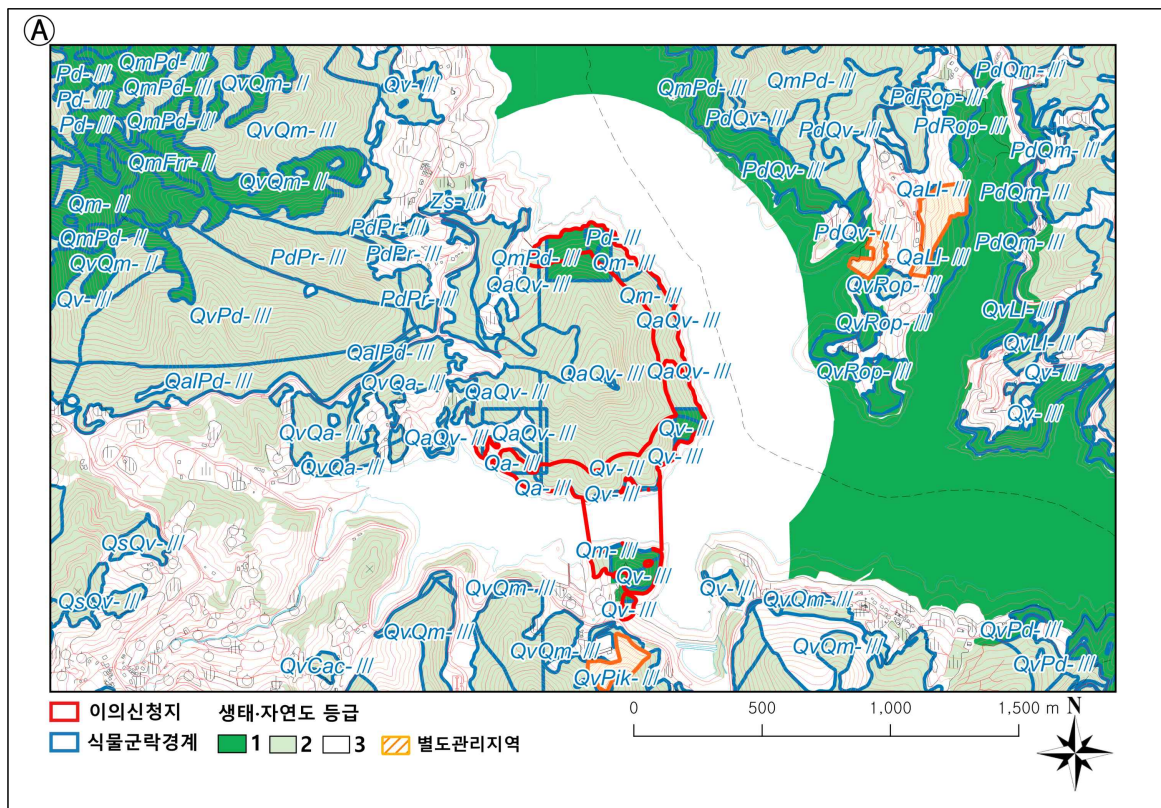




### 3. 수정·보완(안) 도면

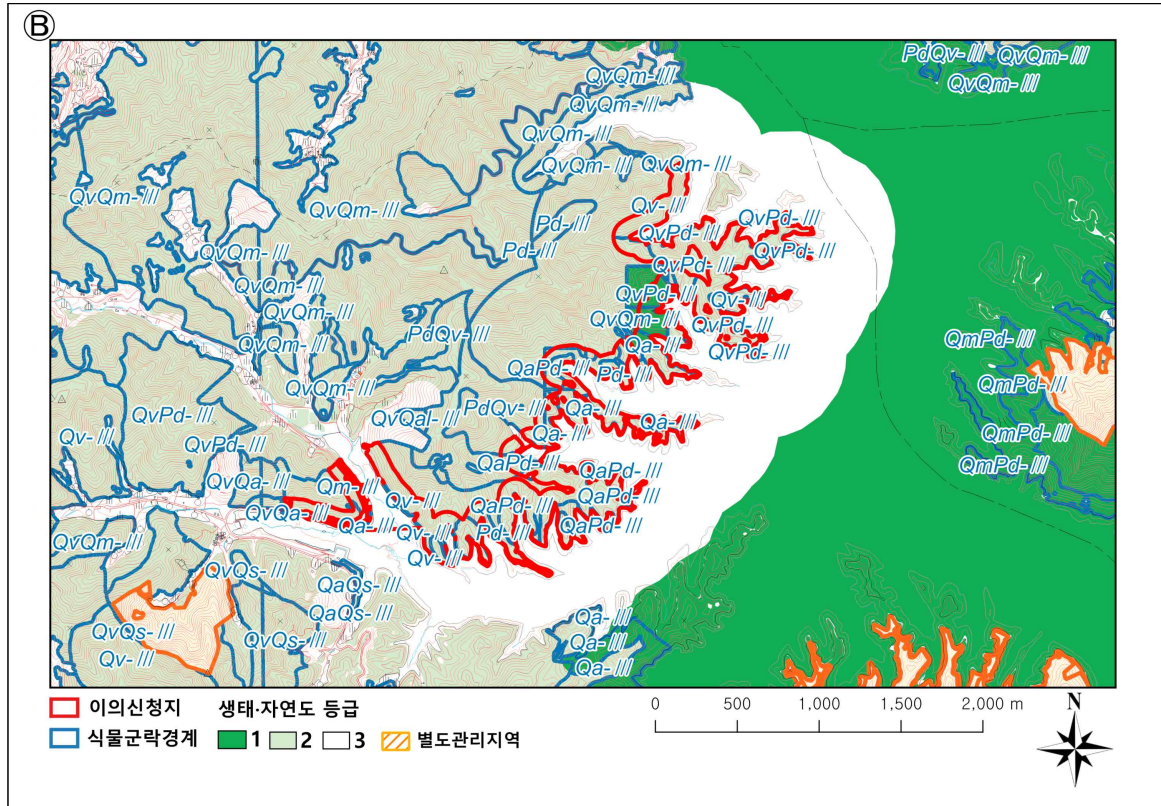


①

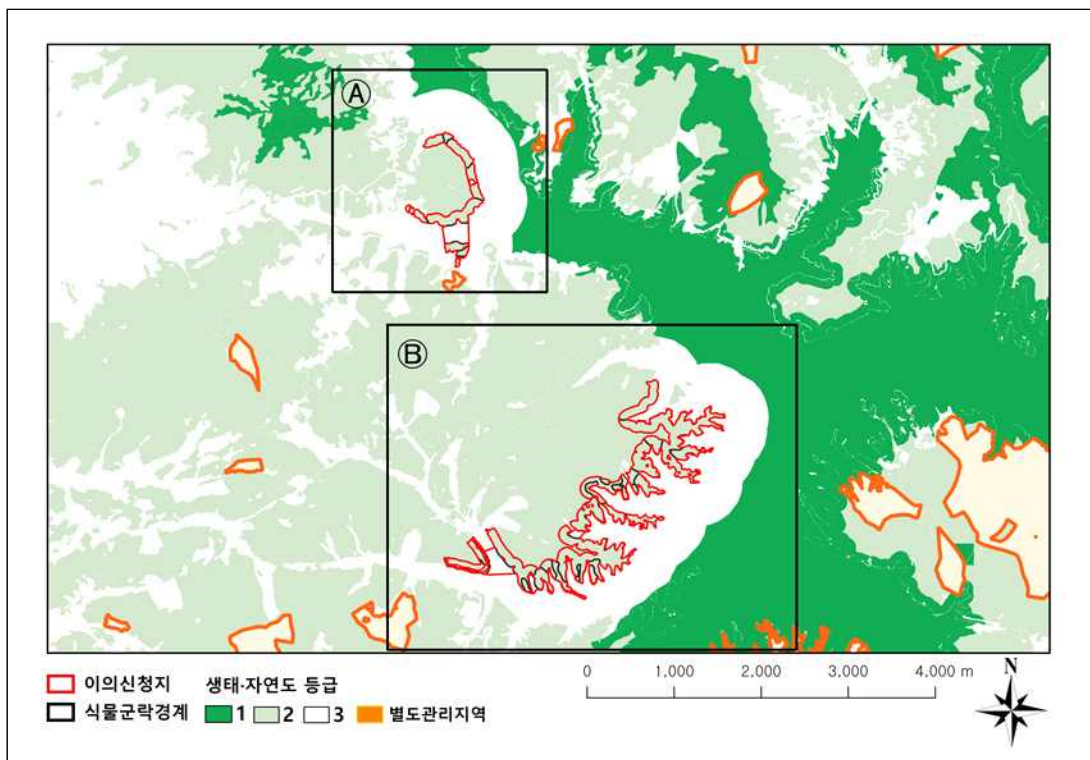




㉔



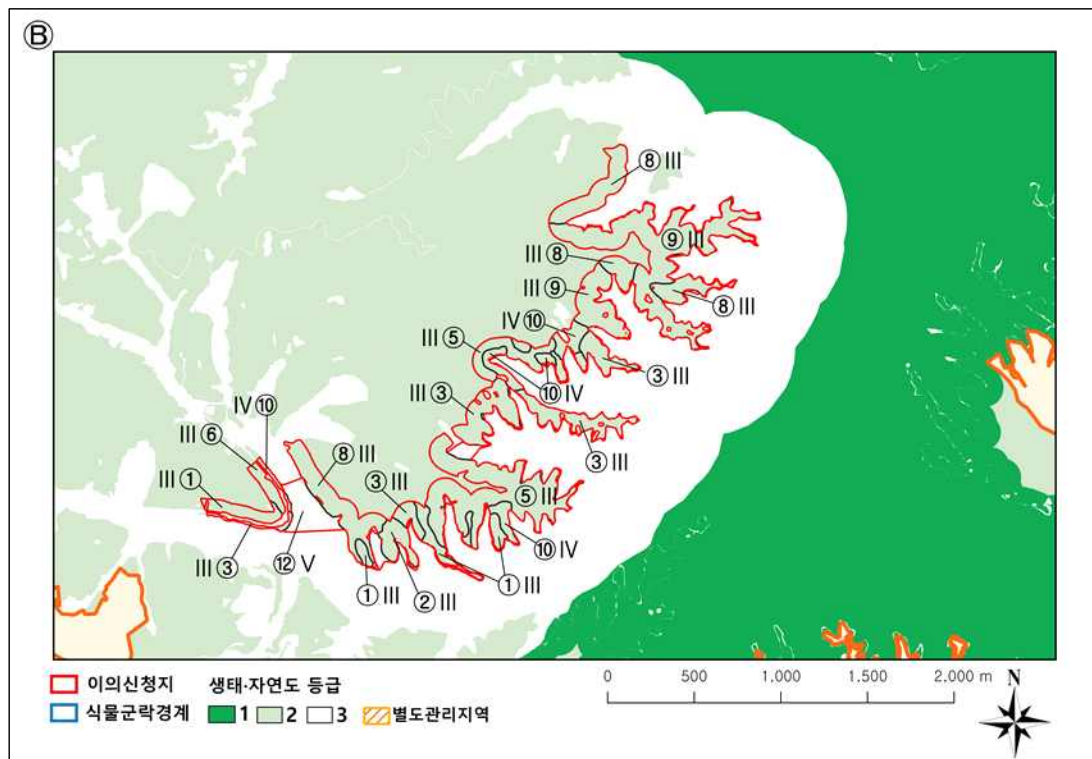
#### 4. 식생정밀조사결과



㉠



㉡



| 순번 | 식물군락 유형            | 식생보전등급 | 생태자연도 |
|----|--------------------|--------|-------|
| ①  | Pd(소나무군락)          | Ⅲ      | 2     |
| ②  | PdQa(소나무-상수리나무군락)  | Ⅲ      | 2     |
| ③  | Qa(상수리나무군락)        | Ⅲ      | 2     |
| ④  | QaQv(상수리나무-굴참나무군락) | Ⅲ      | 2     |
| ⑤  | QaPd(상수리나무-소나무군락)  | Ⅲ      | 2     |
| ⑥  | Qm(신갈나무군락)         | Ⅲ      | 2     |
| ⑦  | QmPd(신갈나무-소나무군락)   | Ⅲ      | 2     |
| ⑧  | Qv(굴참나무군락)         | Ⅲ      | 2     |
| ⑨  | QvPd(굴참나무-소나무군락)   | Ⅲ      | 2     |
| ⑩  | Rop(아까시나무식재림)      | Ⅳ      | 2     |
| ⑪  | Seg(2차초지)          | Ⅴ      | 3     |
| ⑫  | Wa(수역)             | Ⅴ      | 3     |